

**Manufacturing Manager**

**Workshop**

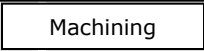
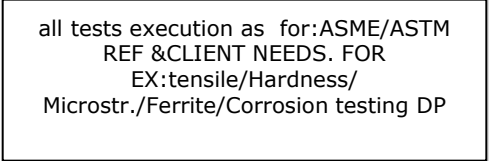
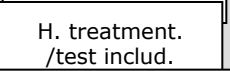
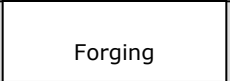
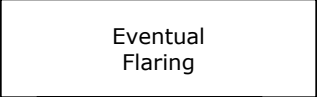
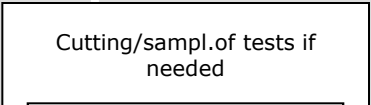
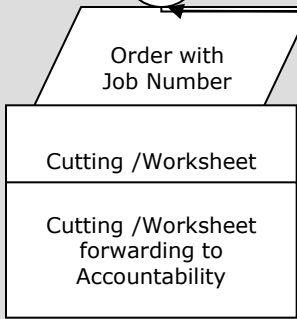
**Quality Control**

*Documents*

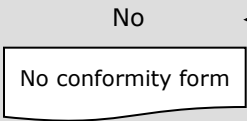
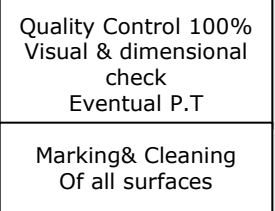
**P01 Sales**

**Da:** Sales Manager  
**A:** FOREMAN  
**Ogg:** Order with Job Number and eventual attachments:  
 - Technical drawings & ref.rules  
 - Notes

Cutting Sheet is typed in the worksheet in order to require raw material from the warehouse.  
 Worksheet is filled in the workshop by FOREMANy and follows the products during manufacturing processes showing job nr.phases of production (to guaranty the traceability of mat.)



First forgings Aspect ratio and dimensions must be checked to assure conformity to next steps eventual P.T on welds or surfaces



Inspected materials ready for workshop

**P02 Purchase and Material Inspection**

- Order with Job Number
- technical drawings & reference rules
- Cutting /Worksheet shown lists of sampling if needed)
- Worksheet (shown manufacturing processes)
- Temperature Records- ASME/ASTM REF. -Forging &H.TREATMENT
- List of tests to the outsource certified laboratory
- Final Inspection Report
- Job Order Record
- Marking labels showing :dimension schedule rules heat nr.x ray report nr.if present & client request
- Final Inspection Report